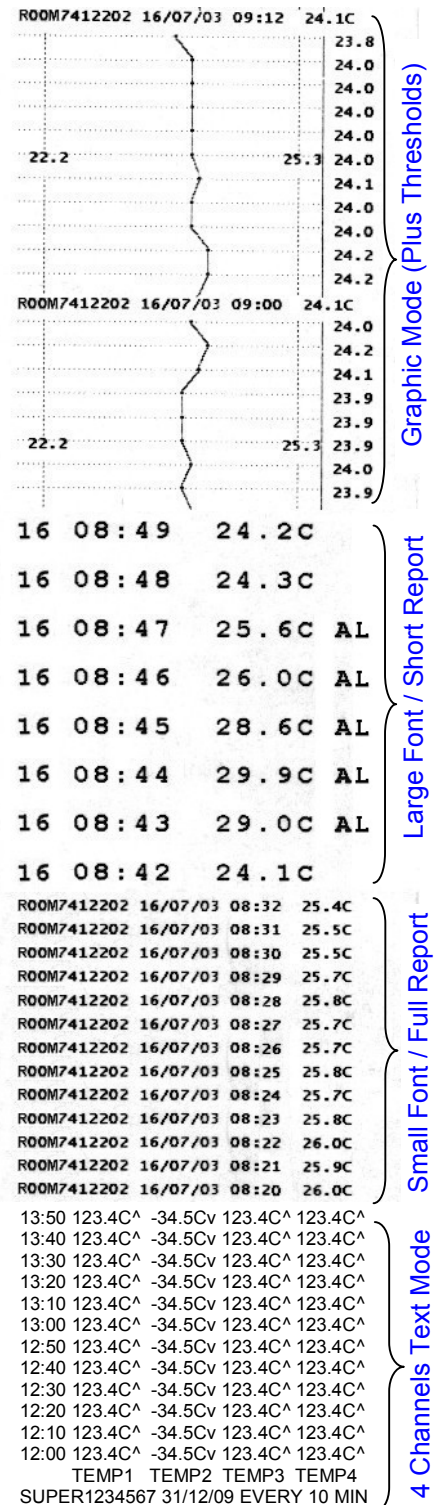


4 Channels Recorder, Temperature & Humidity Logger, Printer & Alarm

INNOVATIVE DESIGN, USER - FRIENDLY, HIGH PERFORMANCES.

- Up to **4 input channels** - Temperature, Humidity & Events (Switches)
- Monitoring, Logging, Alarm, Data Export - Real Time Printing.
- Logging frequency - 1 thru 120 Minutes, (1 Min. increments)
- Up and Down Alarms – Alarm Delay 0-120min. (each channel)
- On the Job Setting (6 function keys)
- Printing in Text (2 font sizes) or Graph modes + Alarm notes
- Printing All 4 Channels reports + Alarm notes
- On the Job Printed help messages, or Summary reports.
- Display: Real time Values + Min. or Max. on request
- Low battery, NO Chart, NO Sensor & Alarms indicators
- Real time Data Export (RS-232 PC port) – No Software needed.
- C° or F° degrees; US or Euro date format
- Internal Alarm & Buzzer + Remote Alarm output 0.5A (10VA)
- Remote Probes 33' (10 M) long, Extendible up to 100' (33 M)
- Tamper proof - I.D. for each channel - Real time clock
- 8.2"x5.3"x2.7" (209x135x69 mm), 2.6 Lbs (1.8 Kg)
- Data & settings retained after Power failure



4 Channel Logger



EN12830

Model No.	Input voltage	Measuring Options	Sample capacity	Included Probes 33'
VLTH-12	12Vac/dc	Up to 4 channels in Any combination of Temperature and Events (Switches)	16,200 points of temperature and Events (X 4 probes)	1 "VLT PROBE" (for Temperature)
VLTH-115	120 VAC			1 "VLS CABLE" (On/Off Indication)
VLTH-230	220~240Vac	Temp., Humidity & Event or 4 channels By 2 probes of Temp. & Humidity	16,200 points Temperature and Humidity (X 4 channels)	1 "VLTH PROBE" (for Temp & Humid)
VLTH-115	120 VAC			1 "VLS CABLE" (On/Off Indication)
VLTH-230	220~240Vac			

Ambient Operating Temp. range: -40°/+65°C, -40°/+150°F, With lithium battery

Ambient Operating relative Humidity: 0 to 95% RH, non-condensing

*Additional Probes from the table below can be added to the base unit (up to 4 channels)

Probes model	Measure Range	Resolution	Accuracy	Repeatability	Response
VLT PROBE Temperature	-40° / +130°C	0,1°C	± 0,3°C	± 0,1°C	5 - 30
	-40° / +266°F	0,2°F	± 0,6°F	± 0,2°F	Sec.
VLTH PROBE Temperature And Humidity	-40° / +85°C	0,1°C	± 0,5°C	± 0,1°C	5 - 30
	-40° / +185°F	0,1°F	± 1,0°F	± 0,2°F	Sec.
	10.0 / 89.9% RH	0,1 %RH	± 2 %RH	± 0,1 %RH	6 - 10
	0.1-9.9 / 90-100%	0,1 %RH	± 4 %RH	± 0,5 %RH	Sec.
VLS CABLE Event / Switch	Recognized dry contact events (On/Off indication)				1 Sec.

4 Print Modes Available

Standard Accessories (optional)	
VLPAPER	2" Thermal chart roll 131'
VLWCASE	Water proof case + Lock
VLSK	Remote alarm silencer
CABLE33H	Probe extension 33' (10m)
CABLE66H	Probe extension 66' (20m)
VPR	Power reducer, 24 to 12V
ADTA	Auto phone dialer
VLCEL	Cellular adaptor to internet

The Vision



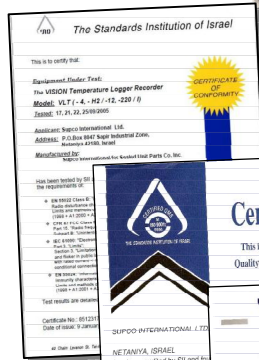
4 Channel Logger - Recorder Temperature - Humidity - Event



1. Monitoring.....Large LED Display
2. Printing.....2" thermal printer
3. Data Logging.....1 year, 16,200 data points
4. Alarm.....Internal & external
5. Data Transfer.....To Computer No software needed
6. Multi Channel.....up to 4 channels

Cold rooms

- Transportation
- Food Storage
- Pharmaceutical
- Agriculture



SUPCO International Ltd.

PO BOX 8047, HAUMANUT ST. 3 NETANYA, 42180, ISRAEL. Tel. 972-9-865 4101 * FAX: 972-9-865 9111 info@supco.co.il